



## DIVING IN MAFIA

The most outstanding dive site in Mafia Island is Chole Bay. It is a vast circular bay where the depth goes from 5 to 27 mt. The continuous replacement of waters due to the tide offers an excellent environment, which has brilliantly defended itself from the calamity "El Nino". Safe dives are possible throughout the whole year in this bay, which is like a natural harbour. However, as Mafia is an equatorial zone, during the months of April and May the island is affected by the monsoon with heavy rains. During these two months, the resort and the dive centre are closed.

From June to September and sometimes in December and January, the monsoons produce particularly strong winds, which prevent divers from going out of the reef at almost all the Tanzanian and Zanzibar dive destinations.

Thanks to Chole Bay and to the shield formed by the archipelago, Mafia is a rare and perfect alternative for diving.

The Dive Center offers great diving for advanced and novice divers in safety under professional instruction (PADI certificate). The snorkeling on the shallow reefs surrounding the many islands in and around Chole Bay is a great attraction for non-divers and divers alike. Trained diving assistants handle all equipment, help divers and check their equipment, so that you are free to enjoy the dives and all other activities during each day. Courses are taught in English.

Almost all Mafia's best diving is at depths of less than 30m so it is a sport diver's paradise. The reefs of the archipelago offer a staggeringly beautiful and varied display of marine life. The excellent condition and high diversity of the reefs stimulated the creation of Mafia Island Marine Park, Tanzania's first marine park. Examples of most kinds of tropical marine habitat occur here, including exposed fringing reefs, rock walls, soft coral and algae-dominated reefs. The diversity of animal and plant life is hard to

match, with over 48 genera of coral and 400 species of fish so far identified. There are excellent examples of giant table coral, delicate seafans, whip coral, and huge stands of blue-tipped staghorn coral.

Large predatory fish and turtles are common and surprisingly unaffected by approaching divers.

Many reef creatures are nocturnal, avoiding daytime predators. As the light fades and the rich "soup" of plankton rises from deeper water, the daytime, rock-like appearance of coral is transformed into a brilliance of colour as the polyps emerge from their stony cups to feed on the plankton. Night diving focuses the attention on the many small, delicate reef species usually missed during the day. A spectacular occurrence is the spawning behavior of coral. Chole Wall and the Coral Gardens are an excellent night dive.

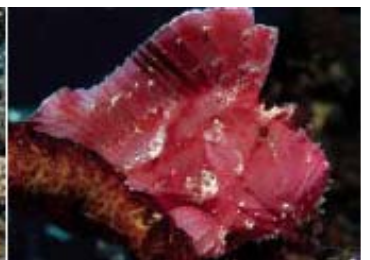
Last but not least, it is possible to swim with whale sharks, one of the most exciting encounters sea lovers can dream of. See the excursions file for detailed info.

### DIVE SITES INSIDE THE BAY

- KINASI WALL: depth 8-21m - running 800m in width
- CHOLE WALL: depth up to 15m - Joins Kinasi Wall
- CORAL GARDENS: Shallow water dive excellent for snorkelling
- CORAL PATCHES: depth 9-17m
- THE PINNACLE: depth up to 24m
- KINASI PASS: depth 6-26m
- MILIMANI REEF: depth 7-19m

### DIVE SITES OUTSIDE THE BAY

- DINDINI WALL: depth 8-28m
- JINA PASS: depth 8-20m
- JINA REEF: depth up to 26m
- JJNA WALL: depth 6-23m
- JUANI REEF: depth up to 24m
- MANGE REEF: depth up to 20m



# Pole Pole

## DIVING IN MAFIA RATES

### GUIDED DIVES

- Single Day Dive
- Double Dive
- 4-dive Package
- 6-dive Package
- 8-dive Package
- 10-dive Package

Prices include use of tanks, weights and guide.

### ADVENTURE DIVES

- Drift Dive
- Night Dive
- Search & Rescue Package

Prices include use of tanks, weights and guide.

### INTRODUCTORY COURSES

- Discover scuba  
(a pre-briefing and trial dive with instructor up to 6 mt)
- Discover scuba diving  
(a short course and a real dive up to 12 mt with instructor)
- PADI Scuba diver  
(first step of certification level)
- SCUBA Review  
(theoretical and practical refresh lesson and dive with instructor)
- Skin diving Lesson
- Private Lesson (per hour)

Prices include all the necessary equipment.

### OPEN WATER COURSE \*

- Open Water Diver Course

Five days with classroom lessons, confined water practice, and 4 open water dives. Inclusive of equipment, use of the book and PADI certification. Minimum Age 12 years.

\* Medical certificate is mandatory for all taking part in a beginners course.

US\$

40  
70  
140  
200  
250  
300

### ADVANCED COURSES

- Advanced Open Water Diver

Follows the open water course and consists of 5 dives: underwater navigation, deep dive (30m depth), night dive, multilevel/computer dive and drift dive.

Price includes equipment, use of the book and certification.

### ADVANCED COURSES

- Medic First Aid

Price includes use of the book and certification.

- Rescue Diver

Expand your knowledge and experience beyond purely recreational level. You'll learn to look beyond yourself and consider the safety and well being of other divers.

Price includes equipment and use of materials.

- Dive Master

Expand your dive knowledge and your skills as you become a dive professional.

US\$

60  
60  
60

US\$

70  
100  
250  
80  
45  
120

US\$

390

US\$

350

US\$

230

500

900

### RENTAL EQUIPMENT

- Jacket/BCD
- Regulator with Octopus and Gauge
- Wet suit
- Mask+Snorkel
- Fins
- Computer
- Torch (diving lamp)
- Complete Equip.(J,R,W,S,MS,F)

Prices per day

US\$

7  
7  
7  
4  
4  
10  
10  
20

Mineral water, tea and coffee always on board and complimentary.

