

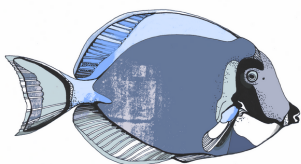
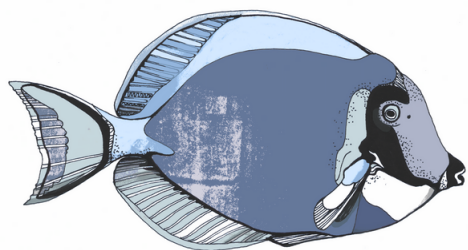
EXCURSION RATES

DISCOVER MAFIA'S HIDDEN GEMS



OCEAN ADVENTURES

| | USD |
|--|--------|
| Snorkeling Trip* | 30 |
| Sunset Cruise * | 30 |
| Marimbani Sand Bank Picnic* | 50 |
| Miewe Island & Darusi (Snorkel & Lunch)* | 45 |
| Mange Sand Bank (Snorkel & Lunch) | 65 |
| Whale Watching (Aug-Oct) | 95/145 |
| Turtle Hatching (Jun-Aug) | 45 |
| Whale Shark Snorkeling (Aug-Mar) | 70/100 |



ISLAND ADVENTURES

| | USD |
|-----------------------------------|-----|
| Chole Island Walk* | 20 |
| Kua Ruins* | 35 |
| Blue Lagoon/Juani Channel* | 35 |
| Utende Village Tour* | 5 |
| Marimbani Sunset | 30 |
| Bird Watching Tour | 15 |
| Light House, Kanga Beach & Hippos | 70 |

NOTES

- Prices are per person. All trips come with water, tea, coffee, and small snacks
- Activities with * are applicable as a free excursion
- All water-based excursions are extremely tide and weather-dependent and can therefore only be booked on-site.
- Chole Island, Light House, and Kua Lagoon \$4 community fee payable locally per person and \$5 for Kua Ruins.
- Turtle watching includes \$10 to Sea Sense to conserve the wildlife of Tanzania.
- Mange Sand Bank minimum of 6 people
- Whale Shark is independently run by Kitu Kiblu at \$100 or Big Blu at \$70 (your choice).
- Whale Watching can include snorkeling \$95 or diving \$145- However is separate from the whale watching which is done from the boat. Includes picnic on Mange sandbank.

Valid till 30 March 2027